

Tenda

Quick Installation Guide

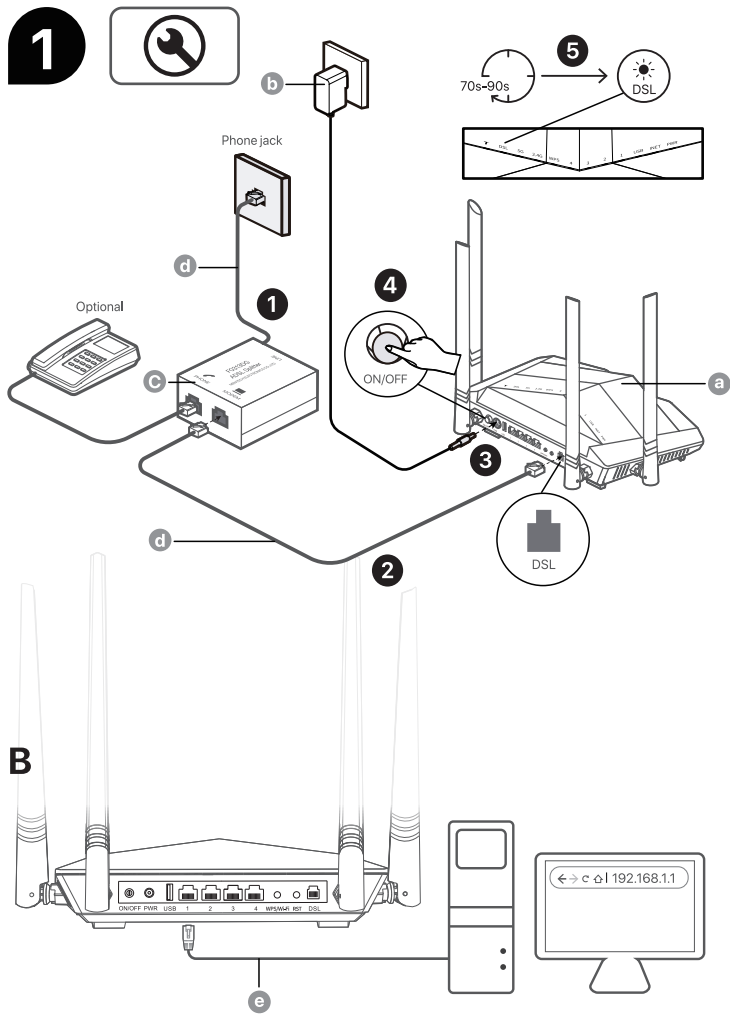
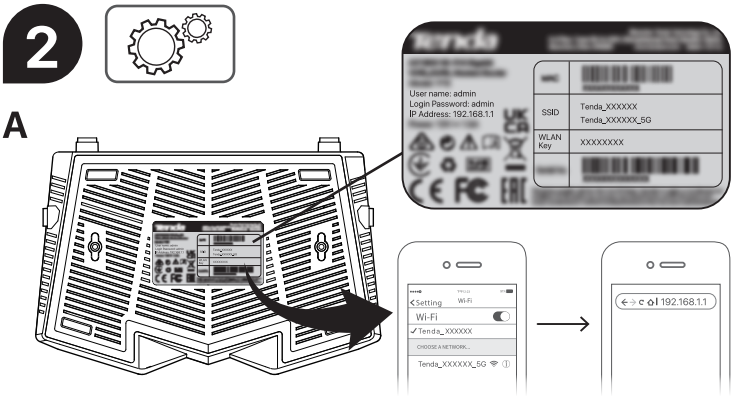
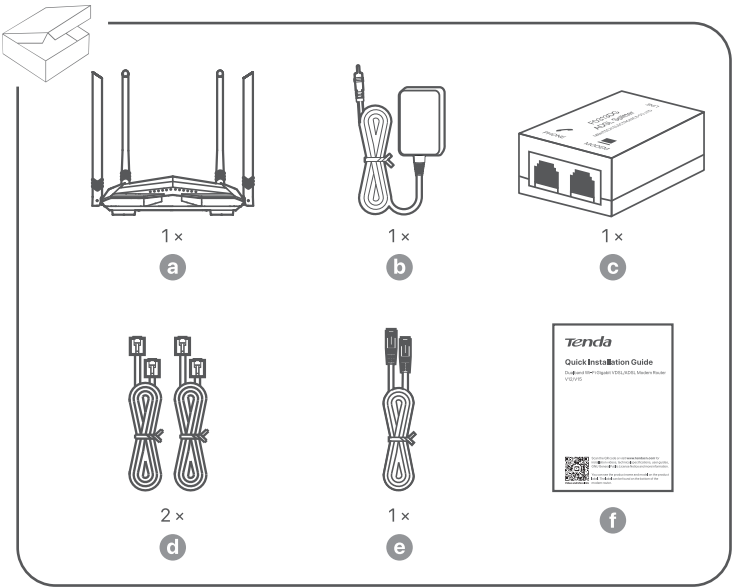
Dualband Wi-Fi Gigabit VDSL/ADSL Modem Router
V12/V15



Video and More Info

Scan the QR code or visit www.tendacn.com for installation videos, technical specifications, user guides, GNU General Public License Notice and more information.

You can see the product name and model on the product label. The label can be found on the bottom of the modem router.



Safety Precautions

Before operating, read and follow these precautions to prevent accidents.

- Operating temperature: 0°C–40°C (32°F–104°F).
- For desktop mounting, the device must be horizontally mounted for safe use.
- For wall mounting, the device is only suitable for mounting at heights ≤ 2m. Wall-mounting materials are self-prepared (2 screws and 2 plastic anchors). Recommended specifications: [Screws] Thread diameter: 3 mm; Length: 14 mm; Head diameter: 5.2 mm. [Plastic anchors] Outer diameter: 6.0 mm; Inner diameter: 2.4 mm; Length: 26.4 mm.
- Do not use the device in a place where wireless devices are not allowed.
- Please use the included power adapter.
- Do not use the power adapter if its plug or cord is damaged.
- Keep the device away from water, fire, high electric field, high magnetic field, and inflammable and explosive items.
- Keep this device out of reach of children to prevent children from using it as a toy and causing personal injury.
- If such phenomena as smoke, abnormal sound or smell appear when you use the device, immediately stop using it and disconnect its power supply, unplug all connected cables, and contact the after-sales service personnel.
- Disassembling or modifying the device or its accessories without authorization voids the warranty, and might cause safety hazards.
- Refer all servicing to qualified service personnel.
- Disconnect the power source during servicing.
- Scan the QR code on this guide's cover to view **Symbols on Products and Materials**.

For the latest safety precautions, see **Safety and Regulatory Information** on www.tendacn.com.

CE Mark Warning

This is a Class B product.

In a domestic environment, this product may cause radio interference, in which case the user may be required to take adequate measures.

This equipment should be installed and operated with minimum distance 20cm between the device and your body.

NOTE: (1) The manufacturer is not responsible for any radio or TV interference caused by unauthorized modifications to this equipment. (2) To avoid unnecessary radiation interference, it is recommended to use a shielded RJ45 cable.

Declaration of Conformity

Hereby, SHENZHEN TENDA TECHNOLOGY CO., LTD. declares that the device (Modem Router) is in compliance with Directive 2014/53/EU.

The full text of the EU Declaration of Conformity is available at the following internet address:

<https://www.tendacn.com/download/list-9.html>

Operating Frequency/Max Output Power

2412MHz–2472MHz/20dBm

5150MHz–5250MHz (indoor use only)/23dBm

Restrictions in the 5 GHz Band

Attention: In EU member states, EFTA countries, Northern Ireland and Great Britain, the operation in the frequency range 5150MHz–5250MHz is only permitted indoors.

AT	BE	BG	CH	CY	CZ	DE	DK	EE	EL	ES	FI	FR	HR	HU	IE
IS	IT	LI	LT	LU	LV	MT	NL	NO	PL	PT	RO	SE	SI	SK	UK(NI)



RECYCLING

This product bears the selective sorting symbol for Waste Electrical and Electronic Equipment (WEEE). This means that this product must be handled pursuant to European directive 2012/19/EU in order to be recycled or dismantled to minimize its impact on the environment.

User has the choice to give his product to a competent recycling organization or to the retailer when he buys a new electrical or electronic equipment.

Appendix

Indicators

Indicators	Color	Status	Description
DSL	Green	Solid on	DSL negotiation is successful.
		Blinking	DSL negotiation is ongoing.
		Off	DSL port is disconnected.
2.4G 5G	Green	Solid on	Wi-Fi is enabled.
		Blinking	Wi-Fi is transmitting data.
		Off	Wi-Fi is disabled.
WPS	Green	Solid on for 2 mins -> Off	Mesh networking or WPS negotiation succeeded.
		Blinking	Mesh networking or WPS negotiation is ongoing.
		Off	Mesh networking or WPS negotiation is not triggered.
1–4	Green	Solid on	Ethernet port is connected.
		Blinking	Ethernet port is transmitting data.
		Off	Ethernet port is disconnected.
USB	Green	Solid on	USB port is connected.
		Blinking	USB port is transmitting data.
		Off	USB port is disconnected.
INET	Green	Solid on	Modem router is connected to the internet.
		Blinking	Data is being transmitted.
	Red	Blinking	Modem router is disconnected from the internet.
PWR	Red	Solid on	Modem router is starting up.
		Blinking	Modem router is upgrading.
	Green	Solid on	Modem router is working properly.
T			Reserved for future use.

Buttons/Jack/Ports

Buttons/Jack/Ports	Description
ON/OFF	Used to turn on or turn off the modem router.
PWR	Use the power adapter to connect the modem router to a power source.
USB	USBV2.0 port. Used to connect to a USB device for file sharing.
1/2/3/4	LAN ports by default. Used to connect to such wired devices as computers and IPTV set-top boxes. 💡 Tips In Ethernet WAN mode, the port 4 can only serve as a WAN port connected to the Ethernet jack for internet access.
WPS/Wi-Fi	Press the button to enable: <ul style="list-style-type: none">• WPS negotiation (V15: 1–2 seconds; V12: 3 seconds).• Wi-Fi (V15: more than 2 seconds; V12: 1 second).• Mesh networking (only V15: 1–2 seconds).
RST	Press the button for about 8 seconds to reset the modem router.
DSL	In DSL WAN mode, the port is connected to the phone jack for internet access.

Mesh networking is only available on V15.

Technical Support

Shenzhen Tenda Technology Co., Ltd.

Floor 6–8, Tower E3, No.1001, Zhongshanyuan Road, Nanshan District, Shenzhen, China. 518052

Website: www.tendacn.com

E-mail: support@tenda.com.cn

support.uk@tenda.cn (United Kingdom)

support.us@tenda.cn (North America)

Copyright © 2025 Shenzhen Tenda Technology Co., Ltd.All rights reserved.

Tenda is a registered trademark legally held by Shenzhen Tenda Technology Co., Ltd. Other brand and product names mentioned herein are trademarks or registered trademarks of their respective holders. Specifications are subject to change without notice.

V2.0 Keep for future reference.